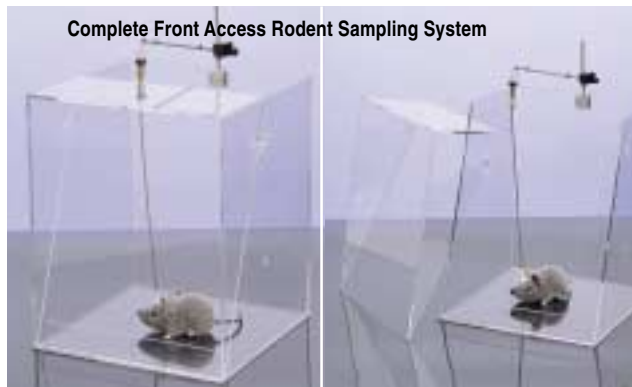


## Infusion Cages



### Front Access Rodent Sampling Cage

This acrylic 30.5 cm (12 in) square by 35.5 cm (14 in) high Sampling Cage provides access to the animal from the front of the box.

The Cage has a removable front cover which is held in place by magnets. Removing the front cover allows easy access to the animal for Probe insertion and removal and for systemic drug treatments without removing the animal from the Cage.

The back wall has pre-drilled holes for the Counter Balanced Lever Arm. The back half of the top is open to accommodate the Swivel, Tether and Counter-Balanced Lever Arm. A hole in a side wall accommodates a water bottle. The Cage has a lip to retain bedding. An absorbent cage liner is available separately.

This Rodent Sampling Cage is available as a Cage Only or as a Complete Rodent Sampling System including Front Access Rodent Sampling Cage, Microdialysis Dual Channel Swivel, Steel Spring Tether for attaching directly to Harvard Round or Flat Probe Holder (not included), and Counter-Balanced Lever Arm.

- For mice and rats
- Easy access saves time and reduces stress
- Ideal for microdialysis and other infusion/withdrawal applications
- Not autoclavable



### Rodent Infusion Cages

These durable polycarbonate cages have been designed to house tethered rodents during short-term infusion and microdialysis experiments. Since the cage is round, tethers will not tangle as they sometimes can in shoebox-type cages. Also, animals are less likely to dislodge sensitive probes since there are no sharp corners. Handles at the top make it easy to move the animal around the lab.

These Animal Cages are most frequently use with our Counter-Balanced Lever Arms, but are also compatible with the Universal Cage Mounting System. Feeders, water bottles and tops are available separately for both the rat and the mouse containers. Pictured above is a complete animal infusion system featuring our PHD2000 Syringe Pump, Mouse Cage with optional Water Bottle, Counter-Balanced Lever Arm, and a Stainless Steel Swivel, The Rat Container is identical in design to the Mouse Container pictured above, just larger in size.

- More reliable method for housing animals during short-term infusion studies
- No sharp corners
- Tethers less likely to tangle
- Probes less likely to dislodge
- Durable polycarbonate for long life
- Available for both mice and rats

Catalog No.	Product
CGS 8197.65	Complete Front Access Rodent Sampling System (pictured above)
CGS 8198.65	Front Access Rodent Sampling Cage Only
CGS 8199.65	Absorbent Liner for Sampling Cage

Catalog No.	Product
CGS 8200.65	Mouse Infusion Cage, polycarbonate, 21.6 cm (8.5 in) high
CGS 8201.65	Slotted Cover for Mouse Infusion Cage
CGS 8326.65	Mouse Infusion Cage with Pellet Feeder
CGS 8327.65	Mouse Infusion Cage with Water Bottle
CGS 8328.65	Mouse Infusion Cage with Pellet Feeder and Water Bottle
CGS 8204.65	Bottom Screen for Mouse Infusion Cage
CGS 8205.65	3.5 inch Counter-Balanced Lever Arm for Mouse Infusion Cage
CGS 8206.65	Rat Infusion Cage, polycarbonate, 38.1 cm (15 in) high
CGS 8207.65	Slotted Cover for Rat Infusion Cage
CGS 8329.65	Rat Infusion Cage with Pellet Feeder
CGS 8330.65	Rat Infusion Cage with Water Bottle
CGS 8331.65	Rat Infusion Cage with Pellet Feeder and Water Bottle
CGS 8210.65	Hemispheric Liner for Rat Infusion Cage, eliminates square corners where animal can damage its microdialysis probe
CGS 8211.65	6 inch Counter-Balanced Lever Arm for Rat Infusion Cage