

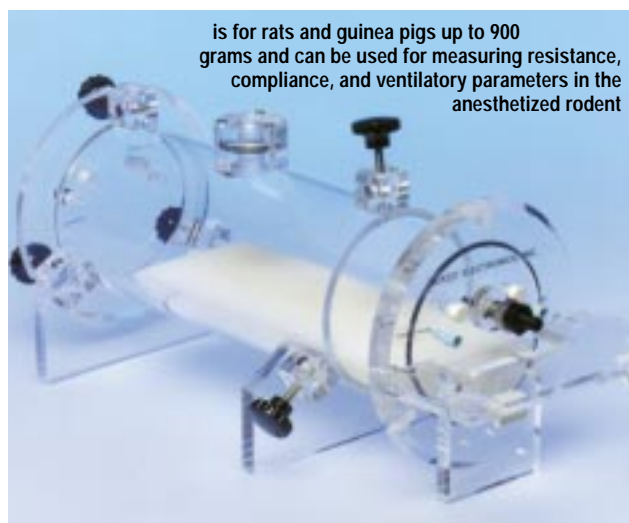
Plethysmographs



for Rat



for Mouse



is for rats and guinea pigs up to 900 grams and can be used for measuring resistance, compliance, and ventilatory parameters in the anesthetized rodent

Whole Body Plethysmographs for Restrained Animals

The Restrained Whole Body plethysmograph is used for making non-invasive ventilatory measurements on conscious animals. In this variation of the Unrestrained Whole Body plethysmograph, the animal is not free roaming, but restrained by the tubular shape of the chamber.

- Non-invasive measurement of ventilatory parameters and bronchoconstriction
- Enhanced accuracy of aerosol delivery with in-line positioning of animal
- Built-in pneumotachograph

For accurate measurements, use this plethysmograph with:

- BioSystem XA for Windows software and the Whole Body Flow Derived Parameters analyzer
- TRD5100 Flow Transducer
- MAXII Preamplifiers
- Bias Flow Regulator

The Restrained Whole Body plethysmograph consists of the main body chamber, and a reference chamber which lessens the effects of atmospheric disturbances.

The animal's nose is positioned directly in line with the aerosol inlet. Because the box volume is small, aerosol concentrations may be altered quickly from zero to full concentration.

For a list of the parameters you can measure using the Restrained Whole Body Plethysmograph, read the description under 'Whole Body Flow Derived Parameters' software analyzer.

Catalog No. Product

CGS 8015.69	Whole Body Plethysmographs for Restrained Animals for Rat
CGS 8016.69	Whole Body Plethysmographs for Restrained Animals for Mouse

Single-Chamber Plethysmographs for Anesthetized Animals

The Single Chamber for Anesthetized Animals is used to make invasive Resistance and Compliance measurements on small rodents. Animal preparation is performed on a hemi-cylindrical Lucite shelf which slides easily into and out of the chamber. A tracheal cannula is inserted in the animal and is connected to a port in the chamber wall.

- Compact and well designed for easy preparation of the animal
- For use with spontaneously breathing or ventilated animals
- Convenient for instrumenting the animal

Other ports in the side walls allow connections to esophageal probes, blood pressure, ECG, etc. Plugging the top-mounted pneumotach completely allows the chamber to be used as a pressure plethysmograph, and changes in box pressure gives a measure of thoracic volume changes.

By a suitable arrangement of external solenoid valves (provided with chamber), the tracheal cannula may be connected to room air, to positive pressure, to negative pressure, or it may be blocked off completely. This enables the chamber to be used in pulmonary maneuvers.

Catalog No. Product

CGS 8017.69	Single-Chamber for Plethysmographs Anesthetized Animals for Mouse
CGS 8018.69	Single-Chamber for Plethysmographs Anesthetized Animals for Rat or Guinea Pig