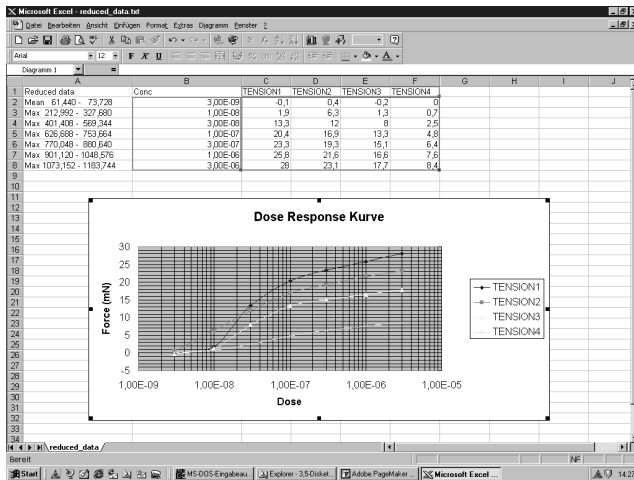
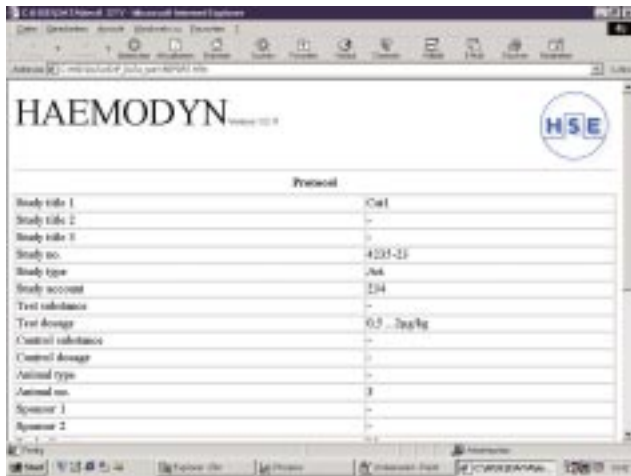


HSE-Harvard* HAEMODYN® W for Haemodynamic Studies



Printout

As in all WINDOWS programs each window can be captured and imported into any text editor for further documentation and printout. It is also possible to print the experimental protocol together with the selected data lines

Generating a Report

To generate a report use the menu item 'File' 'Report'. The report is generated as an HTML file, the Internet explorer is automatically opened. The report contains the experimental protocol and the selected data. There are three optional software modules one for left ventricular pressure, one for flow, and one for respiration.

Catalog No. Product

Discontinued

- | | |
|-------------|---|
| CGS 8161.72 | Software HSE-Harvard* HAEMODYN W |
| CGS 8162.72 | HSE-Harvard Data Acquisition Hardware PLUGSYS Version |
| CGS 8163.72 | HSE-Harvard Data Acquisition Hardware Stand Alone Version |
| CGS 8164.72 | Optional LVP Advanced Software Module |
| CGS 8165.72 | Optional Flow Advanced Software Module |
| CGS 8166.72 | Optional Respiration Software Module |