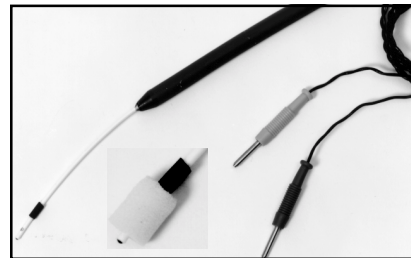
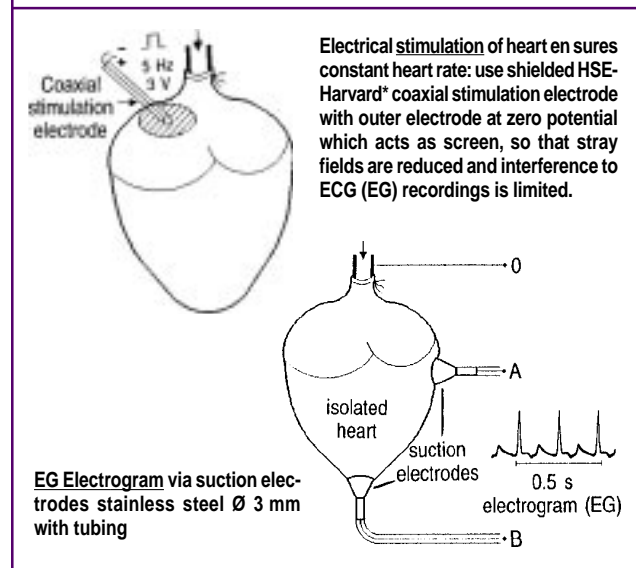
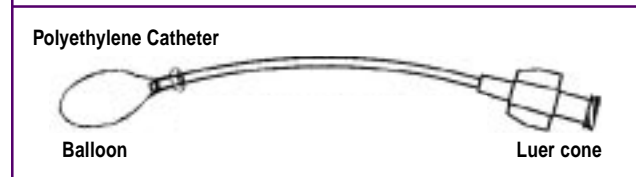
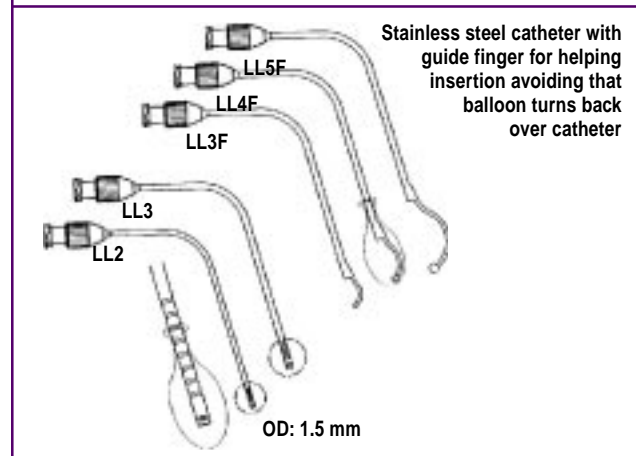
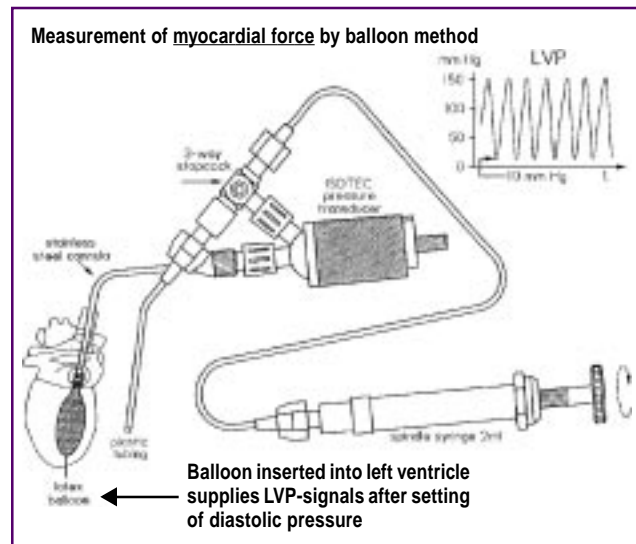


Isolated Organ and Tissue

Balloon Accessories for the Isolated Heart Systems



Electrode for monophasic action potential with different electrode at tip and indifferent electrode at side. During use, indifferent electrode is covered with wet sponge in contact with heart surface.

Table for Selecting Balloon Size

Species	Body Weight (kg)	Size No.	Latex Balloon			
			Volume	Sizes: D x L mm	Catalog No.	
Mice	0.02 to 0.1	2	0.01 ml	2 x 5	CGS-8000.73	
Rat	0.1 to 0.2	3	0.03 ml	3 x 7	CGS-8001.73	
Guinea Pig	0.3 to 0.4	4	0.06 ml	4 x 8	CGS-8002.73	
	0.5	5	0.1 ml	5 x 9	CGS-8003.73	
Rabbit	0.7	6	0.2 ml	6 x 10	CGS-8004.73	
	1.0	7	0.3 ml	6.8 x 11	CGS-8005.73	
	1.2	8	0.4 ml	8 x 12	CGS-8006.73	
	1.6	9	0.5 ml	8.5 x 13	CGS-8007.73	
Cat	1.7	10	0.7 ml	10 x 14	CGS-8008.73	
	2.5	12	1.3 ml	12 x 17	CGS-8009.73	
	2.8	13	1.6 ml	13 x 18	CGS-8010.73	
	3.0	14	1.9 ml	14 x 19	CGS-8011.73	
	3.5	15	2.4 ml	15 x 20	CGS-8012.73	
	Dog		16	3.0 ml	16 x 22	CGS-8013.73
			17	3.5 ml	17.2 x 23	CGS-8014.73
		18	4.0 ml	18 x 24	CGS-8015.73	
	4	19	5.0 ml	19 x 25	CGS-8016.73	
	Up to 20	24	10 ml	24 x 32	CGS-8017.73	
	Up to 40	30	20 ml	30 x 40	CGS-8018.73	

Catalog No.

Descontinuado
CGS 8019.73

Descontinuado
CGS 8020.73

CGS 8021.73

Descontinuado
CGS 8022.73

CGS 8023.73

Descontinuado
CGS 8024.73

Product

Stainless Steel Catheter 1464 LL2 (0.01 kg) for Balloon Size 2 to 4

Stainless Steel Catheter 1464 LL3 (0.01 kg) for Balloon Size 5 and Above

Stainless Steel Catheter 1464 LL3F (0.01 kg) with Guide Finger, for Balloon Size 5 to 105

Stainless Steel Catheter 1464 LL4F (0.01 kg) with Guide Finger, for Balloon Size 12 to 18

Stainless Steel Catheter 1464 LL5F (0.01 kg) with Guide Finger, for Balloon Size 19 to 30

Polyethylene Catheter (0.01 kg) with Button and Luer-Lock Connector, External Thread and 80 mm long Tubing, 2 mm Ø, 1 mm ID