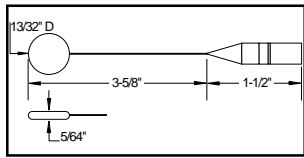


YSI 400 Series Thermistor Probes



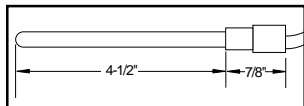
Surface Probe with Stainless Steel Shaft

- Time constant 0.6 seconds

Ideal for water baths, skin surface, oral and other flat surface temperature measurements. Also for some air temperature applications. The 10.3 mm (0.41 in) diameter sensor disk has a stainless steel patient side and epoxy back. The 2 mm (0.08 in) thick disk is attached to a 82 mm (3.2 in) stainless steel shaft which is attached to 38.1 mm (1-1/2 in) handle. Maximum temperature 150°C (302°F). Isolated. Supplied individually.

Catalog No. Product

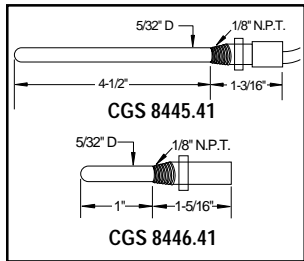
CGS 8449.41 Surface Probe with Stainless Steel Shaft



General Purpose Immersion Probes

These heavy duty, immersible Probes are for liquids, gases and semi-solids. Not good for surface temperature measurements. The sensor is mounted on the end of a 114 mm (4-1/2 in) long stainless steel shaft. Maximum temperature 150°C (302°F). Isolated. Available in two shaft diameters. Supplied individually.

Catalog No.	Time Constant	Shaft Diameter
CGS 8448.41	2.5 sec	3.2 mm (1/8 in)
CGS 8447.41	3.4 sec	4 mm (0.16 in)



Permanent Installation Temperature Probes

- Time constant 3.4 seconds

These Probes are for permanent installation in pipes and closed vessels. The Probe's fittings can withstand 500 p.s.i. The 4 mm (0.16 in) diameter stainless steel shaft is supplied complete with a 3.2 mm (1/8 in) National Pipe Thread compression fitting. The shorter shaft Probe has a detachable lead. Maximum temperature is 150°C (302°F). Not isolated.

Catalog No. Product

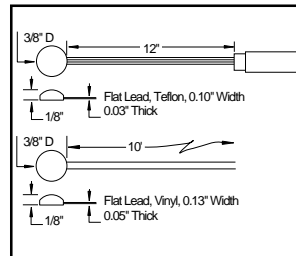
CGS 8446.41 2.5 cm (1 in), pkg. of 1
 CGS 8445.41 11.4 cm (4-1/2 in), pkg. of 1

Adhesive Patches

For holding Skin Surface Temperature Probes securely against skin for good thermal conductivity. Minimizes distortion of Probe readings. Hypo-allergenic medical grade adhesive.

Catalog No. Patch Size

CGS 8444.41 Adhesive Patches, 28.6 mm (1-1/8 in), pkg. of 100
 CGS 8443.41 Adhesive Patches, 38 mm (1-1/2 in), pkg. of 100



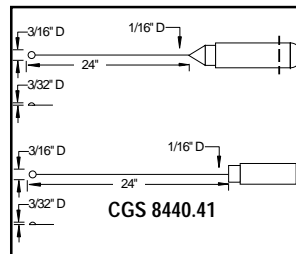
Large Surface Probes

- Time constant 1.1 seconds

Ideal for cuvette, water bath, skin surface and other flat surface temperature measurements. The 9.5 mm (3/8 in) diameter by 3.2 mm (1/8 in) thick sensor disk has a stainless steel patient side and epoxy back. Two Probes are available. The Probe has a flat, vinyl covered 3.1 m (10 ft) lead terminating in a 400 series phone jack connector. The 409A has a flat, 305 mm (12 in) Teflon coated lead connected to a 3.1 m (10 ft) vinyl covered lead with a 400 series phone jack connector.

Large Surface Probes

Catalog No.	Maximum Temp.	Cable	Cable Dimensions, W x Thick
CGS 8442.41	150°C (302°F)	Teflon Coated	2.5 x 0.8 mm (0.1 x 0.03 in)
CGS 8441.41	100°C (212°F)	Vinyl	3.4 x 1.3 mm (0.13 x 0.05 in)



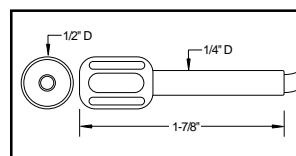
Small Surface Probes

- Time constant 0.3 seconds

Ideal for cuvette, water bath, skin surface and other flat surface temperature measurements. The 4.8 mm (3/16 in) diameter sensor disk has a stainless steel patient side and epoxy back. The 2.4 mm (3/32 in) thick disk is attached to a 61 cm (24 in) Teflon covered wire. Maximum temperature 150°C (302°F). Probe disk is isolated, connector is not isolated. Available without or with a detachable lead. The detachable lead sensor disk is autoclavable. Isolated. Supplied individually.

Catalog No. Product

CGS 8440.41 Small Surface Probe with Non-Detachable Lead



Air and Gas Probe

- Time constant 10 seconds

This Probe is for temperature measurements in test rooms, incubators, environmental chambers, gas streams, etc. It has a 12.7 mm (1/2 in) diameter stainless steel cage around the epoxy encapsulated thermistor. Length from the tip to the shaft end is 47.6 mm (1-7/8 in). Maximum temperature 150°C (302°F). Isolated. Supplied individually.

Catalog No. Product

CGS 8439.41 Air and Gas Probe