

Fatty Acid Methyl Esters (GC)

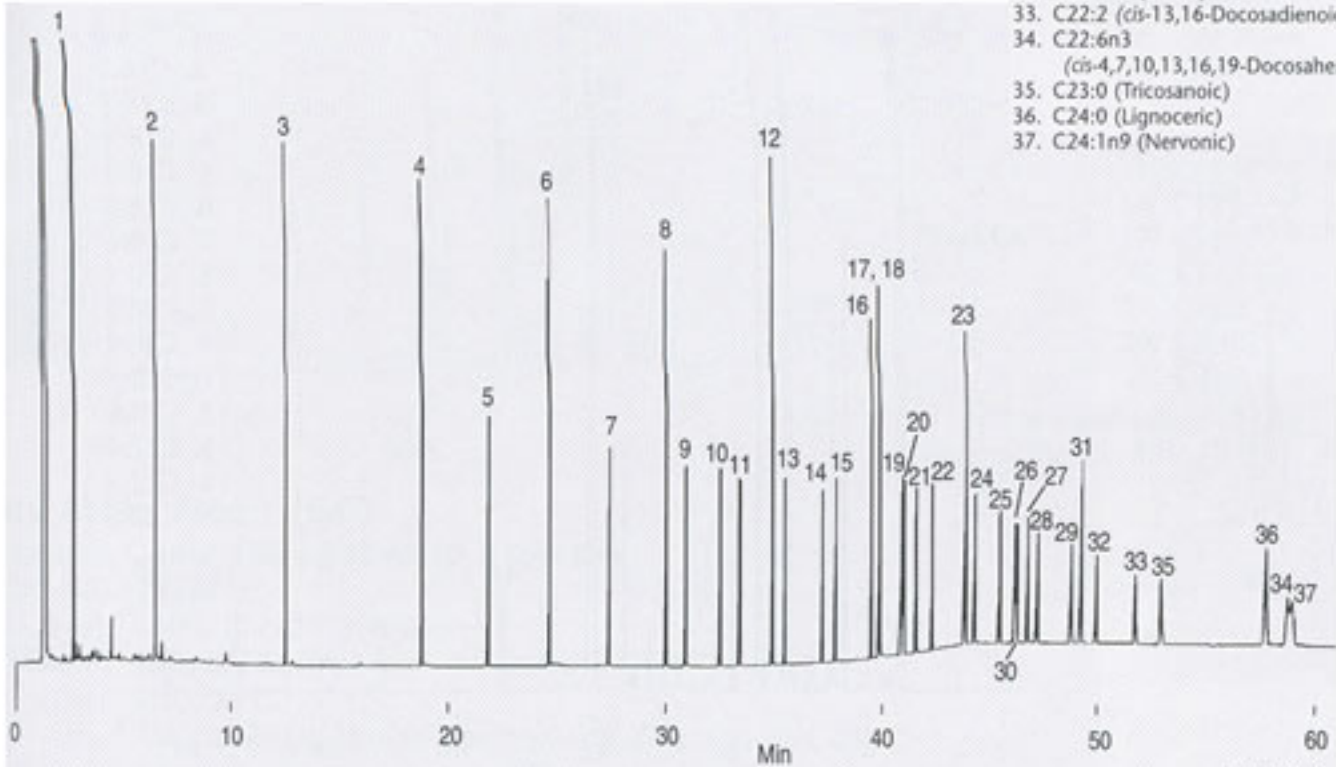
General Conditions

Det.: FID, 260°C

Inj.: 1µL of Supelco 37 Component FAME Mix (10mg/mL total), split 100:1, 250°C

For more information, request publication T110855.

Component (acid methyl esters)	Weight %
1. C4:0 (Butyric)	4
2. C6:0 (Caproic)	4
3. C8:0 (Caprylic)	4
4. C10:0 (Capric)	4
5. C11:0 (Undecanoic)	2
6. C12:0 (Lauric)	4
7. C13:0 (Tridecanoic)	2
8. C14:0 (Myristic)	4
9. C14:1 (Myristoleic)	2
10. C15:0 (Pentadecanoic)	2
11. C15:1 (<i>cis</i> -10-Pentadecenoic)	2
12. C16:0 (Palmitic)	6
13. C16:1 (Palmitoleic)	2
14. C17:0 (Heptadecanoic)	2
15. C17:1 (<i>cis</i> -10-Heptadecenoic)	2
16. C18:0 (Stearic)	4
17. C18:1n9c (Oleic)	4
18. C18:1n9t (Elaidic)	2
19. C18:2n6c (Linoleic)	2
20. C18:2n6t (Linolelaidic)	2
21. C18:3n6 (γ -Linolenic)	2
22. C18:3n3 (α -Linolenic)	2
23. C20:0 (Arachidic)	4
24. C20:1n9 (<i>cis</i> -11-Eicosenoic)	2
25. C20:2 (<i>cis</i> -11,14-Eicosadienoic)	2
26. C20:3n6 (<i>cis</i> -8,11,14-Eicosatrienoic)	2
27. C20:3n3 (<i>cis</i> -11,14,17-Eicosatrienoic)	2
28. C20:4n6 (Arachidonic)	2
29. C20:5n3 (<i>cis</i> -5,8,11,14,17-Eicosapentaenoic)	2
30. C21:0 (Henicosanoic)	2
31. C22:0 (Behenic)	4
32. C22:1n9 (Erucic)	2
33. C22:2 (<i>cis</i> -13,16-Docosadienoic)	2
34. C22:6n3 (<i>cis</i> -4,7,10,13,16,19-Docosahexaenoic)	2
35. C23:0 (Tricosanoic)	2
36. C24:0 (Lignoceric)	4
37. C24:1n9 (Nervonic)	2



794-0661

Oven: 50°C (2 min) to 220°C at 4°C/min, hold 15 min

Carrier: helium, 30cm/sec, 205°C