

Water Sample Screened for BTEX and Other Compounds (SPME/GC)

Sample: 0.7mL water spiked with 2-600µg/liter each analyte, 0.25g NaCl added
SPME Fiber: 30µm PDMS

Extraction: headspace, 12 sec (no stirring), ambient temp.
Desorption: 2-3 min, 250°C (0.75-1.0mm ID inj. port liner)

Oven: 70°C (0.2 min) to 180°C at 50°C/min
Carrier: hydrogen, 12psi (+ 30mL/min nitrogen make-up gas)
Det.: FID, 250°C

CGS 1006.96

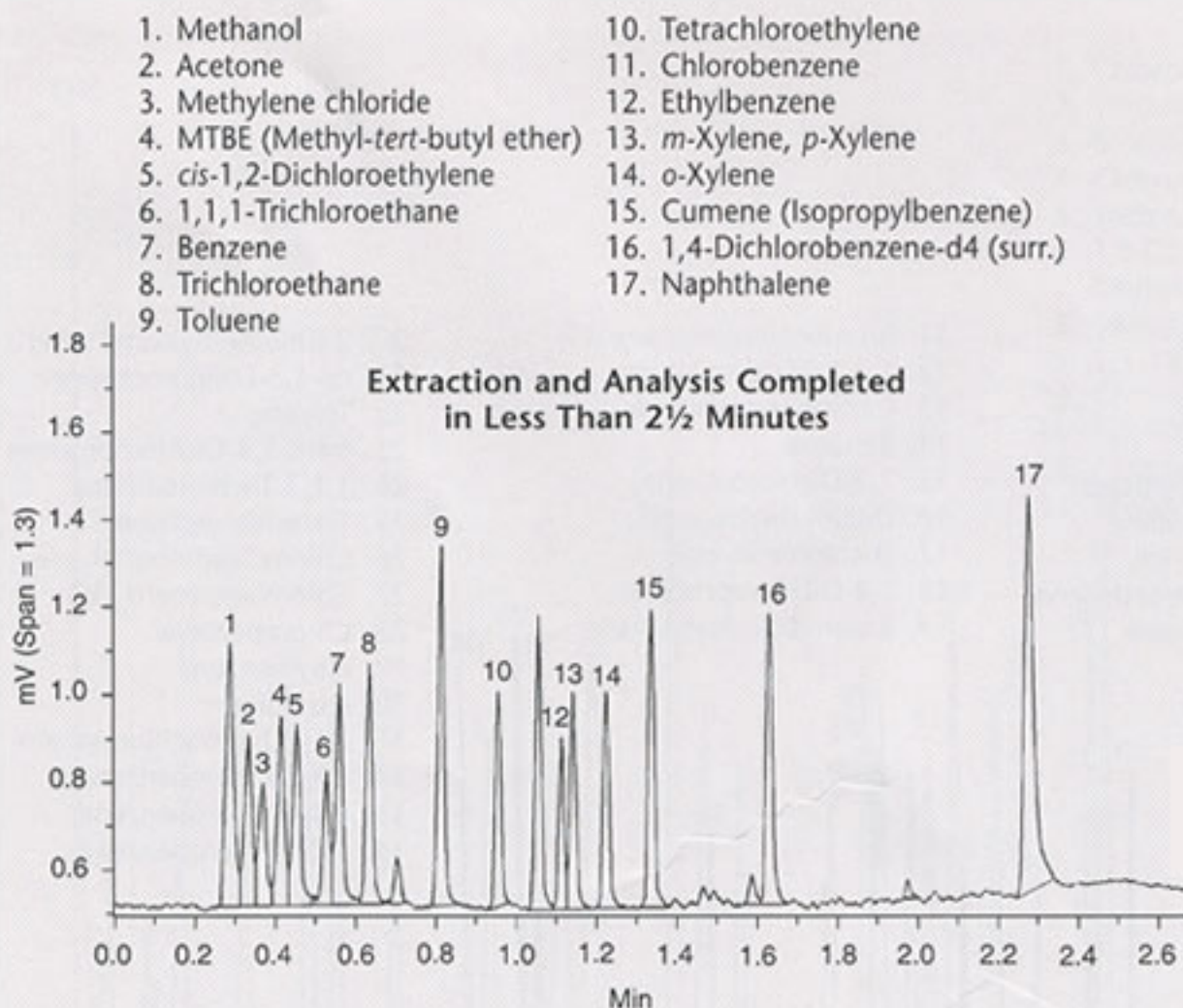


Figure provided by T.L. Schumacher, Lancaster Laboratories
(a division of Thermo Analytical, Inc.), Lanaster, PA 17605-2425