

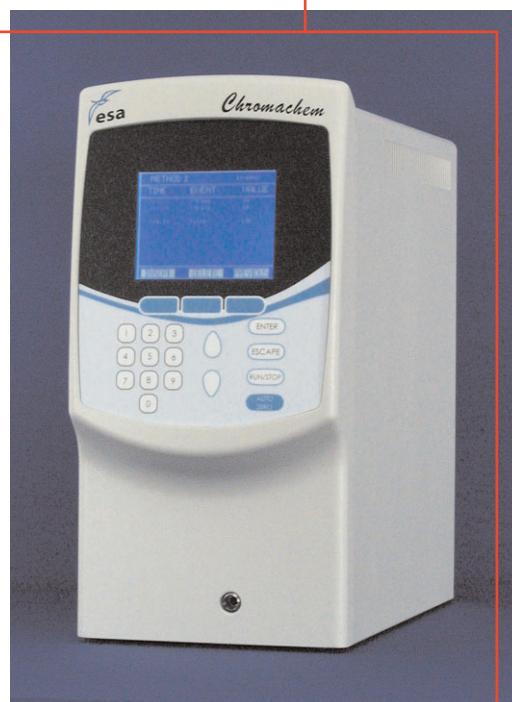
Evaporative Light Scattering Detector

Evaporative Light Scattering Detection

- Universal detection of non-volatile compounds
- Compatible with gradient elution HPLC
- More sensitive than RI and low wavelength UV detection
- Low temperature evaporation allows detection of semi-volatile and thermosensitive analytes
- Compatible with most mobile phases, even at high or microbore flow rates
- Consistent response factors are less variable than RI, UV and MS
- Ideal for use in parallel with mass spectrometry

The ESA Chromachem® Detector provides

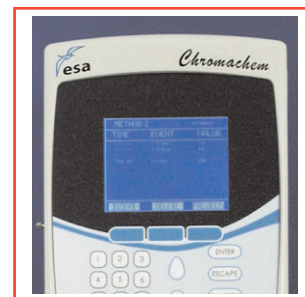
- Programmable attenuation, events, gas shutoff and digital filtering
- Enhanced multi-line display for more system information
- Enhanced digital processor - 20 bit A/D, digital filtering
- RS232 enabled



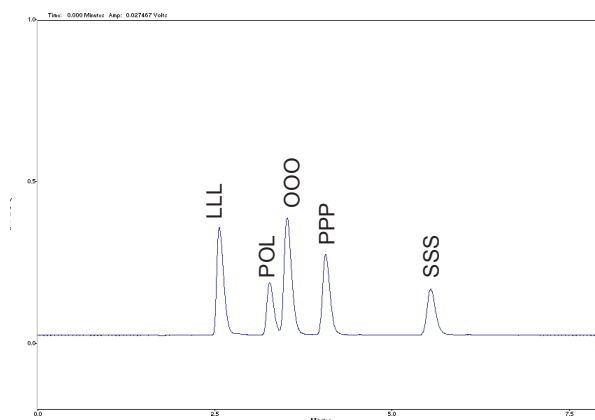
Applications for Evaporative Light Scattering Detection

Lipids	Carbohydrates	Polymers	Others
Triglycerides	Monosaccharides	Polystyrene	Steroids
Phospholipids	Disaccharides	Polyethylene	Amino Acids
Fractionation of Lipids	Polysaccharides	Glycols	Plastic Additives
Carboxylic acids	Maltodextrin	Surfactants	Pharmaceuticals
Glycolipids			Saponins

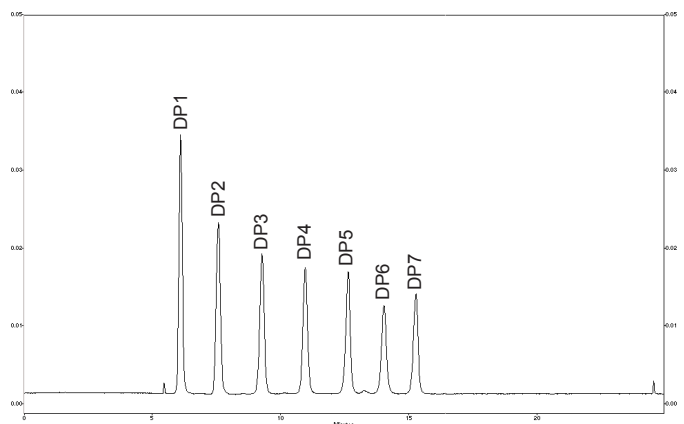
The ESA Model *Chromachem* Evaporative Light Scattering Detector



Triglycerides



Oligosaccharides



Specifications

Light Source:	High intensity halogen lamp
Detection:	Photomultiplier (high sensitivity)
Analog Output:	0 - 1 Volt
Warm Up Time:	< 10 min. at 150°C
Temperature Range	
Evaporation Chamber:	Up to 150°C in 1°C increments
Nebulizer:	Up to 70°C
Autozero:	Front panel or external trigger
Mobile Phase Flow	
Rate Range:	20 µl to 3 mL/min, aqueous or organic
Nebulizer Type:	Venturi
Gas Flow:	1 to 2 L/min, recommended pressure 1.0 - 2.0 bars
Electronic Control:	Internal microprocessor
Display:	Graphical
Dimensions:	46 cm x 23 cm x 48 cm (18.2" H x 8.9" W x 18.7" D)
Weight:	14.5 kg (32 lb)
Power Requirements:	115/230 VAC, 50/60 Hz, 210W
Product Certification:	CE, UL and CSA
Security Function:	Yes

Specifications subject to change without notice.

The 3 Step N.E.D. Process

1. Nebulization of column effluent
2. Evaporation of mobile phase
3. Detection of light scattered by analyte particles

Ordering Information

Chromachem Evaporative Light Scattering Detector
with Accessories

Part Number

70-5852



CGS

Av. Vereador José Diniz, 2421-B - Brooklin Paulista - Cep: 04603-001 - São Paulo - SP - Brasil
Fone: 11-5041-0022 - Fax: 11-5044-6282 - e-mail: cgnet@dglnet.com.br - Site: www.ogs.com.br